



THE EVERGLADE PLOT 151 KNIGHTWOOD CHASE STATION

FORDINGBRIDGE, SP6 1JW

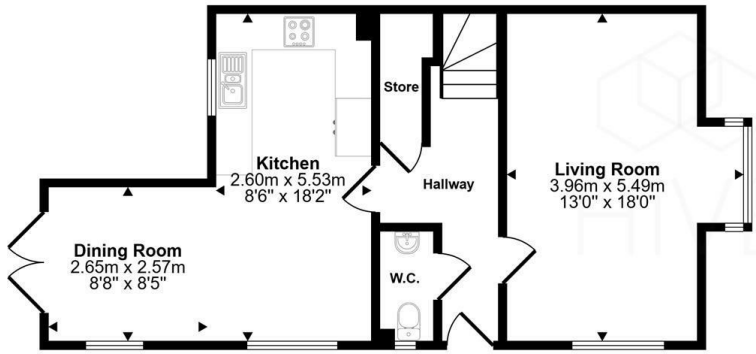
£485,000
FREEHOLD

The Everglade is a stylish and spacious home featuring an open-plan living area, dual-aspect sitting room, three bedrooms, and a private garage with parking. Some excellent buyer INCENTIVES available with this plot.

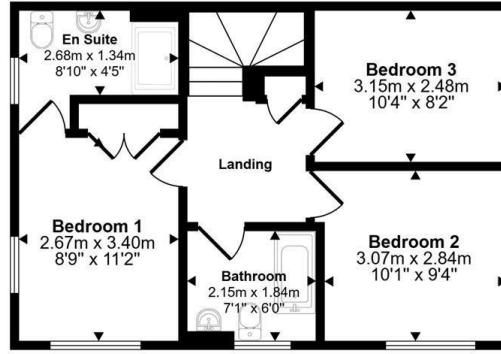


HIVE

Approx Gross Internal Area
98 sq m / 1052 sq ft



Ground Floor
Approx 53 sq m / 569 sq ft



First Floor
Approx 45 sq m / 483 sq ft

This floorplan is only for illustrative purposes and is not to scale. Measurements of rooms, doors, windows, and any items are approximate and no responsibility is taken for any error, omission or mis-statement. Icons of items such as bathroom suites are representations only and may not look like the real items. Made with Made Snappy 360.



Energy Efficiency Rating		
	Current	Potential
Very energy efficient - lower running costs		
(92 plus) A		
(81-91) B		
(69-80) C		
(55-68) D		
(39-54) E		
(21-38) F		
(1-20) G		
Not energy efficient - higher running costs		
England & Wales	EU Directive 2002/91/EC	

Agents Note: Whilst every care has been taken to prepare these particulars, they are for guidance purposes only. All measurements are approximate and are for general guidance purposes only and whilst every care has been taken to ensure their accuracy, they should not be relied upon and potential buyers/tenants are advised to recheck the measurements

Hive & Partners
Unit F1
Arena Business Centre 9
Nimrod Way
Ferndown
BH21 7UH

01202 122 002
sales@hiveandpartners.co.uk
<https://www.hiveandpartners.co.uk/>



HIVE